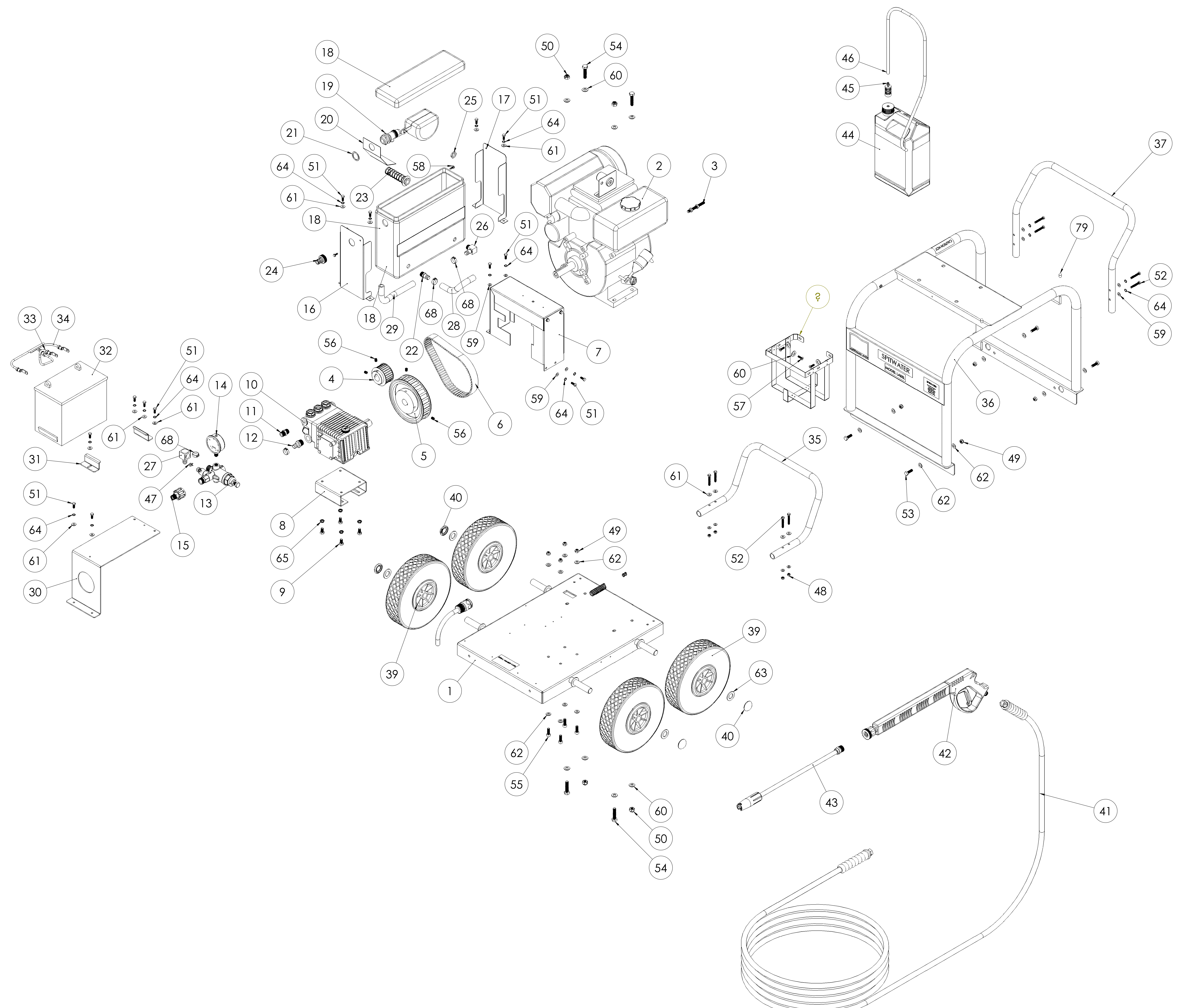


PROPRIETARY CONFIDENTIAL AND COMPLIANCE: THE INFORMATION CONTAINED IN THIS DRAWING IS THE SOLE PROPERTY OF SPITWATER AUSTRALIA. ANY REPRODUCTION IN PART OR AS A WHOLE WITHOUT THE WRITTEN PERMISSION OF SPITWATER AUSTRALIA Pty.Ltd. IS PROHIBITED. ANY CHANGES REQUIRE ENGINEERING OFFICE APPROVAL PRIOR TO IMPLEMENTATION. IF IN DOUBT - CONSULT YOUR TEAM LEADER OR PRODUCTION MANAGER.



ITEM NO.	PART NUMBER	MATERIAL DESCRIPTION	QTY.
1	48024-M	BASE COMPLETE	1
2	49125-KE	KUBOTA DIESEL ENGINE 4.6 Kw	1
3	72015	GOVERNOR KNOB COMPLETE	1
4	70600	PULLEY HTD 26-8M-30 F BORE 1"-KEY 1/4"	1
5	70602	PULLEY HTD 64-8M-30F BORE 24mm-KEY 8mm	1
6	70630-C	BELT HTD SUPRA DRIVE 640 8M 30	1
7	48758-E	BELT GUARD COMPLETE	1
8	48852-E	PUMP MOUNT COMPLETE	1
9	199303700	SCREW M 8x16-S739	4
10	1PP83-A	W 140 SX MALE SHAFT	1
11	48752-A	70921/R NIPPLE 3/8" M BSPT - 3/8" M BSPT	1
12	47036	70921/U HOSEBARB 1/2" M BSPT - 1/2" HOSEBARB	1
13	1PA135-C2	K1.2 CHEM MAX 10-16l/min - 250bar - 60°C	1
14	44390	GAUGE BOTTOM/ATT 63mm 400bar 1/4" M BSPT	1
15	PA26025050	AR1 B M22 3PCS SCREW-TYPE CPL-3/8M BSP	1
16	72010	TANK HOLDER FRONT COMPLETE - SATIN BLACK	1
17	72011	TANK HOLDER REAR COMPLETE - SATIN BLACK	1
18	48033-R	BREAK TANK	1
19	PA29016020	RGO FLOAT VALVE 10bar 60° C 29l/m @ 2bar	1
20	48875	70075/T SPLASH PROTECTION,85 WIDE	1
21	70200-Z	70043/A WASHER ALUMINIUM 3/4"	1
22	48775	70291/P HOSEBARB 3/8" M BSPT - 1/2" BARB	1
23	48784	SUCTION FILTER 3/8" F BSPP	1
24	70559	TAIL PIECE COMPLETE 3/4" F BSPP - SNAP ON	1
25	70558	70291/U NUT 3/8" BSPP	1
26	44007	ELBOW 3/8" M BSPT - 1/2" HOSEBARB 10bar	1
27	47036-E	70349/V ELBOW 1/2" F BSPP - 1/2" HOSE BARB	1
28	48733-F	70036/E HOSE AQUAGEN 1/2" 160mm	1
29	48920	70036/E HOSE AQUAGEN 1/2" 250mm	1
30	72046	BATTERY SUPPORT COMPLETE	1
31	48912-C	BATTERY HOLDER BRACKET COMPLETE-SATIN BL	2
32	48911-B	DELKOR 12V BATTERY SEALED 22NF-330D	1
33	48985-B	BATTERY CABLE RED COMPLETE	1
34	48986	BATTERY CABLE BLACK COMPLETE	1
35	72016	ENGINE PROTECTION COMPLETE	1
36	48015-F	ROLL FRAME COMPLETE	1
37	48110-F	HANDLE COMPLETE	1
38	72045	DETERGENT BASKET COMPLETE	1
39	47045 P	10" BLACK PLASTIC RIM SOLID PU DIAMOND	4
40	47044	HUB CAP mm.20	4
41	44330	H/P HOSE 10m 3/8" FBSPP-3/8" F BSPP	1
42	PA30209230	VEGA S3 SS & QR 40l/min 310bar 160°C	1
43	SWA007	SINGLE LANCE MULTIREG 135	1
44	47002	DETERGENT BOTTLE 5l NATURAL	1
45	46241	2 STEP PLASTIC DET FILTER 1/4" HOSE BARB	1
46	44539-G	DETERGENT HOSE 1000mm	1
47	46239	SPRING HOSE CLAMP 9.3/9.9	1
48	70051-D	NYLOCK NUT M6 x 1.00 - 6	4
49	70051-F	NYLOCK NUT M8 x 1.25 - 6	8
50	70051-H	NYLOCK NUT M10 x 1.50 - 6	4
51	70104-I	SCREW HEX HEAD M6 x 1.00 x 16 - 4.8	14
52	70104-X	SCREW HEX HEAD M6 x 1.00 x 40 - 4.6	8
53	70106-P	SCREW HEX HEAD M8 x 1.25 x 25 - 4.6	4
54	70108-Y	SCREW HEX HEAD M10 x 1.50 x 45 - 4.6	4
55	70122-P	SOCKET CAP SCREW M8 x 1.25 x 25 - 12.9	4
56	70128-G	SOCKET GRUB SCREW M8 x 1.25 x 10	4
57	70145-L	CONTERSUNK HEAD SCREW M6 x 1.0 x 20	3
58	70196	HEX HEAD SELF-DRILL SCREW COLLAR 4.8x16	2
59	70200-E	FLAT WASHER 6.50 x 13 x 1.20	12
60	70200-I	FLAT WASHER 10.50 x 21 x 1.50	11
61	70200-F	FLAT WASHER 6.50 x 16 x 1.20	14
62	70200-H	FLAT WASHER 8.50 x 17 x 1.40	16
63	70200-P	STANDARD FLAT WASHER 20.50 x 35 x 3	4
64	70210-D	INTERNAL TOOTH LOCK WASHER M 6	18
65	70220-F	SPRING LOCK WASHER M8	4
66	70571	CABLE TIE G200x4.6N	9
67	70570	CABLE TIE G100x2.5N	2
68	70597-D	EAR CLAMP 304SS21-18.5mm 7mm WIDE	4
69	20253	SPITWATER LOGO SMALL LABEL	1
70	20241	MODEL LABEL	1
71	20200	AUSTRALIAN MADE LABEL	1
72	20205	PARTS & SERVICE LABEL	1
73	20240	SERIAL NUMBER LABEL	1
74	20201	CAUTION HOT LABEL	1
75	48656	PALLET HP251/A-201SAE-HP201DEH	1
76	48655	PACKAGING HP251A HP201SAE HP2215DEL	1
77	20242	PACKAGING LABEL	2
78	72030	PACKING BRACKETS	4
79	48443	PVC CAP 1/00 Ø4.8mm x13SC701 48013089	2

REV.	ISSUED FOR CONSTRUCTION	R.D	16/03/2016
	AMENDMENT	BY. CHK APP	DATE

NOTES:

	DATE	NAME
APPROVED		
CHECKED		
DRAWN	11/12/2017	Rajdev

DO NOT SCALE DRAWING

SCALE 1:5

THIRD ANGLE

SPITWATER AUSTRALIA

HEAD OFFICE AND MANUFACTURING PLANT
953 METRY STREET, ALBURY,
NSW 2640, AUSTRALIA
PH. 02 60257255 FAX. 02 60401187
E-MAIL: enquiries@spitwater.com
WEB SITE: www.spitwater.com

DESCRIPTION:
HP12150DE 150bar 12l/m 4.6kW KUBOTA

MATERIAL:

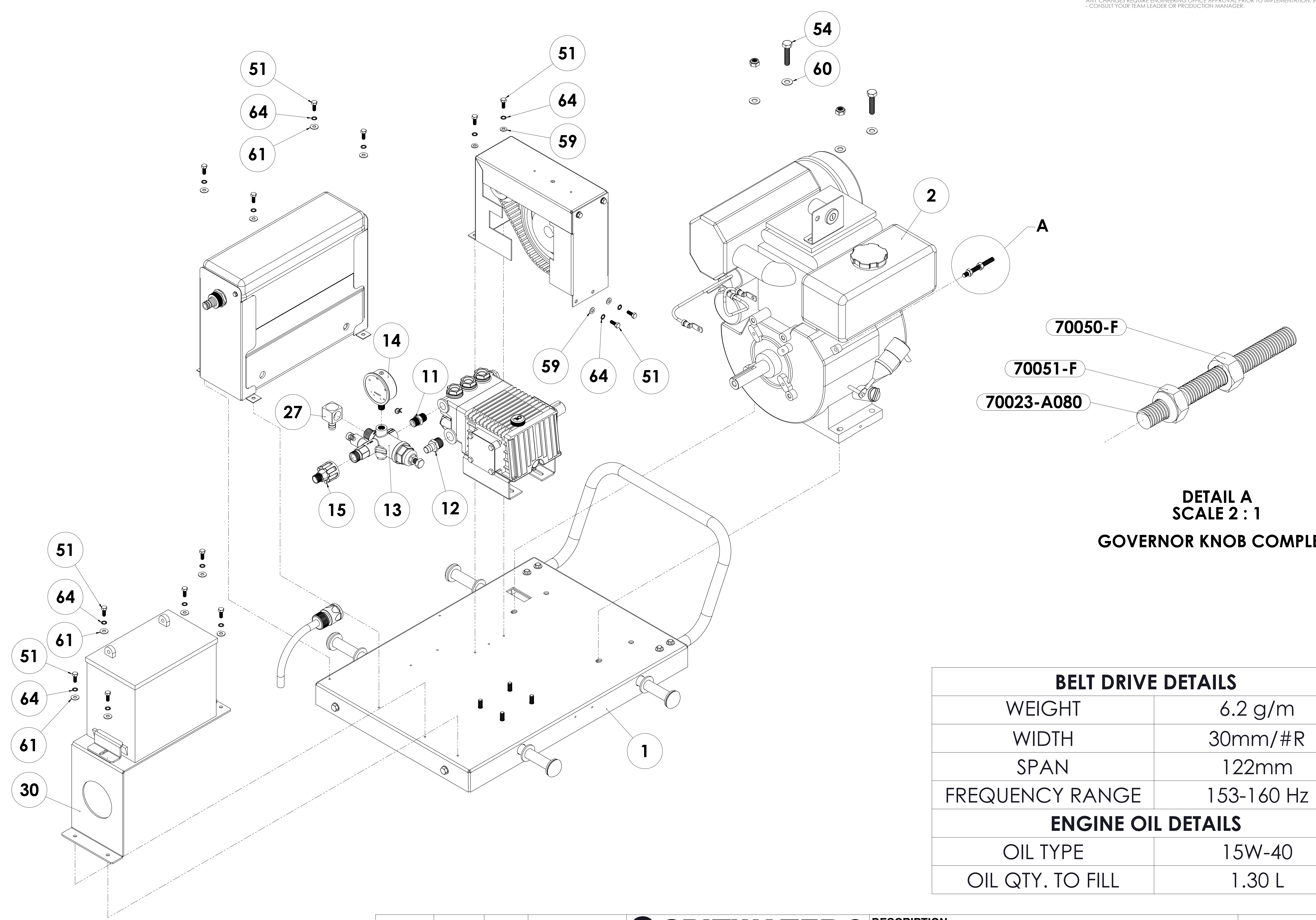
TIME OF PRODUCTION:

PART No.
SCWD062

QTY: -

ATOT:
FINISH:

SHEET 1 OF 3



DETAIL A
SCALE 2 : 1
GOVERNOR KNOB COMPLETE

BELT DRIVE DETAILS	
WEIGHT	6.2 g/m
WIDTH	30mm/#R
SPAN	122mm
FREQUENCY RANGE	153-160 Hz
ENGINE OIL DETAILS	
OIL TYPE	15W-40
OIL QTY. TO FILL	1.30 L

	DATE	NAME
APPROVED		
CHECKED		
DRAWN	11/12/2017	Rajdev

SCALE
1:2.5

THIRD ANGLE

SPITWATER®
AUSTRALIA

HEAD OFFICE AND MANUFACTURING PLANT
953 METRY STREET, ALBURY,
NSW 2640, AUSTRALIA
PH. 02 60257255 FAX. 02 60401187
E-MAIL: enquiries@spitwater.com
WEB SITE: www.spitwater.com

DESCRIPTION:
HP12150DE 150bar 12l/m 4.6kW KUBOTA

MATERIAL:

TIME OF PRODUCTION:

ATOT:-
FINISH:

PART No.
SCWD062

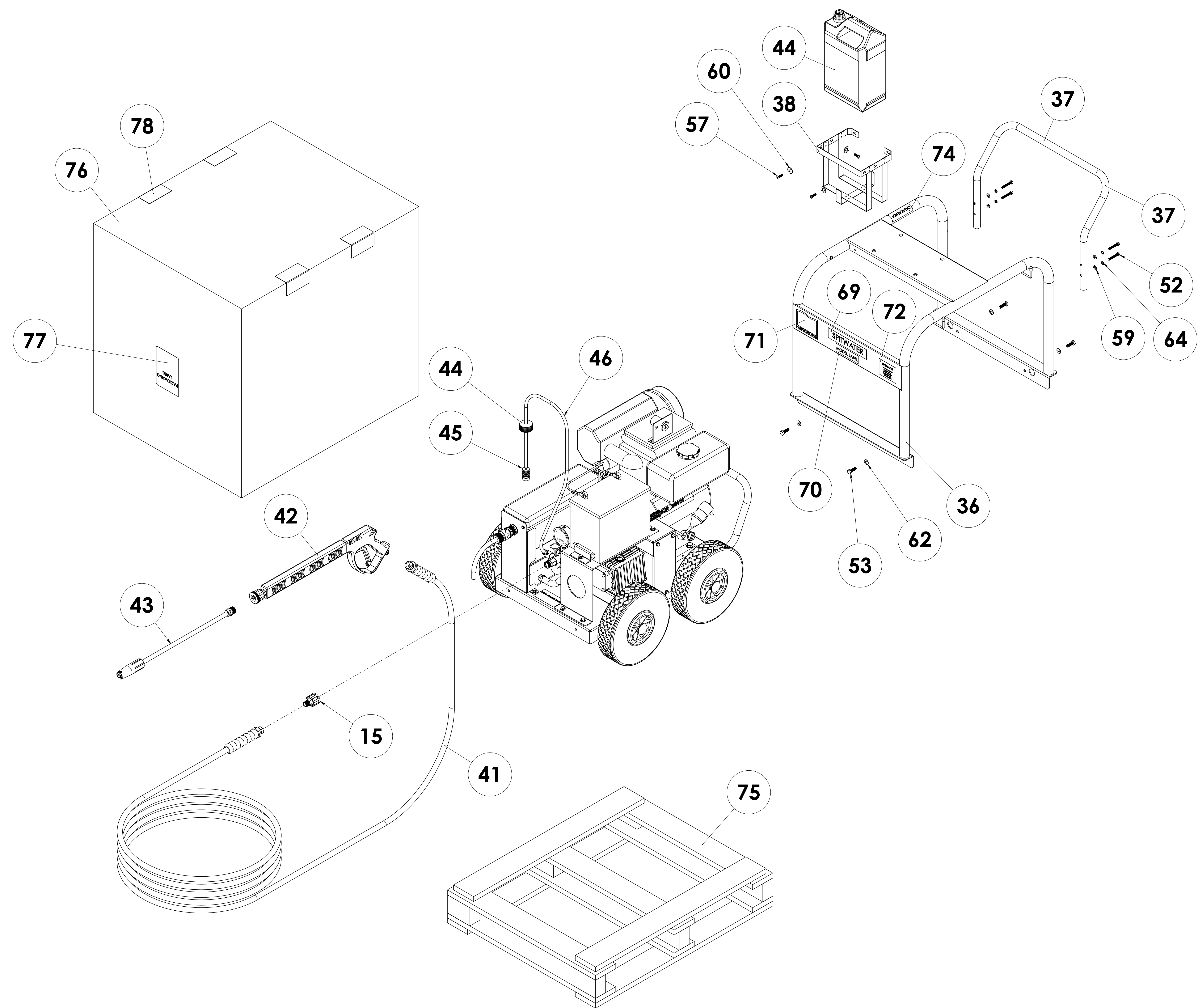
QTY: -

SHEET 2 OF 3

REV.	ISSUED FOR CONSTRUCTION	R.D	16/03/2016
AMENDMENT	BY.	CHK	APP

NOTES:

DO NOT SCALE DRAWING

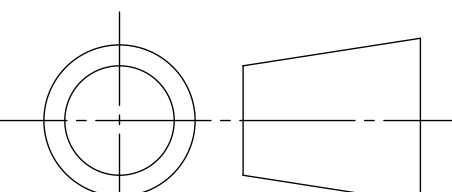


NOTES:

	DATE	NAME
APPROVED		
CHECKED		
DRAWN	11/12/2017	Rajdev

DO NOT SCALE DRAWING

SCALE
1:4



THIRD ANGLE

SPITWATER®
AUSTRALIA

HEAD OFFICE AND MANUFACTURING PLANT
 953 METRY STREET, ALBURY,
 NSW 2640, AUSTRALIA
 PH. 02 60257255 FAX. 02 60401187
 E-MAIL: enquiries@spitwater.com
 WEB SITE: www.spitwater.com

DESCRIPTION:
HP12150DE 150bar 12l/m 4.6kW KUBOTA

MATERIAL:

TIME OF PRODUCTION:

ATOT:-
FINISH:

PART No.
SCWD062

QTY: -

SHEET 3 OF 3